

The Weekend Academy at the Byam Shaw

Business plan

Deborah Froome
Director, Weekend Academy
January 2004

Contents

0.0 Summary

1.0 Introduction

1.1 Weekend Academy's objectives

1.2 Background

1.3 Structure of Weekend Academy

1.4 How Weekend Academy operates

1.5 Current Funding

1.6 Finance-raising objective

1.7 What is being offered to funders

2.0 Weekend Academy's programmes on offer

3.0 Weekend Academy's requirements

4.0 Weekend Academy's objectives: measuring and evaluating success

4.1 Programme for the year

5.0 The context in which the Weekend Academy will operate

Appendices

Appendix 1: The Background to the establishment of the Weekend Academy

Appendix 2: Terms of Reference of the Weekend Academy

Appendix 3: Achievements to date: pilot projects

Appendix 4: Definitions

0.0 Summary

The Weekend Academy is an accessible and inclusive art project based at the Byam Shaw School of Art. Weekend Academy offers disabled and marginalized people opportunities to make, discuss and exhibit art using the studios and workshops at the Byam Shaw. Weekend Academy offers a wheelchair-accessible venue and welcomes all users irrespective of physical ability. Weekend Academy works with partner groups in Islington, and London-wide. Weekend Academy is free or at low-cost to all users.

The Weekend Academy is trying to achieve increased access to professional-standard fine art facilities for the whole community, by opening up the Byam Shaw's building to a wide variety of user groups. Weekend Academy works towards integration of disabled and non-disabled people. Weekend Academy aims to establish routes to further training and professional development in the arts for young people, local people, and disabled and excluded people.

The Weekend Academy is looking for £143,000.00 annually to fund and manage a full programme of exhibitions, residencies and projects for local community groups, schools and families, **and accessible workshops for D/deaf and disabled people.** This figure comprises £76,000.00 p.a. for project costs and £67,000.00 p.a. for running and management costs. Section 6 (Finance Section) gives a full breakdown of the costs of each separate event, project or workshop.

1.0 Introduction



visually impaired summer school participant, 2003

Introduction

Weekend Academy is a physically accessible, “open level” fine art facility based at the Byam Shaw School of Art. The Byam Shaw building is accessible to disabled people, and the ethos of the Weekend Academy is to be open to users’ needs and to offer professionally-led art activities to groups and individuals regardless of physical ability.

Wheelchair-accessible facilities available to the Weekend Academy at Byam Shaw include:

- dedicated life-drawing studio
- Jerwood sculpture studio and sculpture yard, with metal, wood, and casting workshops and a small ceramics kiln
- spacious well-lit studio space
- excellent art library
- lecture theatre with DVD, film & video projection facilities
- café and courtyard
- print-room with facilities for silkscreen, etching and intaglio (woodblock & lino) and stone lithography; and
- Byam Shaw’s Concourse Gallery – installation and exhibition space at the heart of the building

“I wish that there had been facilities like this when I was at college.”

Nancy Willis, European Year of Disabled People artist-in-residence

Weekend Academy also has use of an IT suite with film, animation and digital photography facilities, and a black and white photographic dark-room. These are situated in the basement and are not currently easily wheelchair accessible.

Weekend Academy has use of the facilities listed above, when they are not in use by the school’s full-time fine art students. In effect this gives the Weekend Academy access to professional quality facilities and space, at weekends and in the Christmas, Easter and Summer vacations. Weekend Academy has been running since October 2002, initially offering pilot and taster courses for the programmes which then started in October 2003, to get feedback¹.

¹ see Appendix 3 for all Weekend Academy’s events, workshops, residencies and exhibitions to date

During this period we have run:

- an open studios weekend;
- three artists' residencies;
- two weeks of accessible art summer schools for disabled people;
- a D/deaf artists' Continuing Professional Development Weekend;
- family Drawing Days and drop-in workshops in the drawing studio, including our award-winning *Big Draw at the Byam Shaw*;
- three visual arts exhibitions (for *Xposure* Festival 2002, the 3rd London Disability Arts Festival; for Henrietta Barnet School's Year 10 residency with Roy Pickering, for Tim Dixon's residency with Bridge School, Islington);
- a disabled artists' film weekend; and
- life-drawing jams: open life-drawing sessions for local school students and adults.

We have used the experience of setting up these pilot projects, together with feedback from participants, to research a practical basis for the opening of the full yearly programme for Weekend Academy in October 2003.

1.1 Weekend Academy's objectives

1. Weekend Academy aims to offer access at low or no cost to marginalized groups – people who have hitherto been excluded from access to art events, workshops and studio tuition, due to physical impairment, learning disability, chronic illness, homelessness, refugee status, or other lack of opportunity.
2. Weekend Academy's programmes of accessible and facilitated activities should offer users and artist-tutors a ladder of opportunity and a bridgehead into employment, further study, greater self-esteem, and an increased enjoyment of the social experience of art and making.
3. Weekend Academy aims to include users from the immediate area, including young people aged 11-19, families and children, local schools and school students, and older people and their carers. Weekend Academy also aims to support young people through linking with schools, and local education out-of-hours networks, by offering a bridge to further study in the arts, and by supporting young people's enjoyment and personal development through art activities.
4. The Weekend Academy should be open to people of all abilities with an interest in art and art activities.

5. The sessions and workshops should be aimed at target groups, including disabled professional artists, school students and young people, disabled people, and family groups, and offer an appropriate level of support for the abilities and interests of each group.

6. Weekend Academy should target disabled and excluded people who have not previously had full access to professional standard fine art facilities and events. Weekend Academy has established through its pilot projects and via its partner organisations and steering group that there is demand from disabled groups in London for professional development for disabled artists and for access to further and higher education and careers in the arts. Up to 80% of arts jobs in the UK are based in London: disabled people need access to these jobs through training and mentoring networks.

7. Weekend Academy should aim to offer an accessible and supportive base for its users to meet each other, establish professional and personal links with practising artists, and find opportunities to share and develop skills and interests through our workshops, training and events.

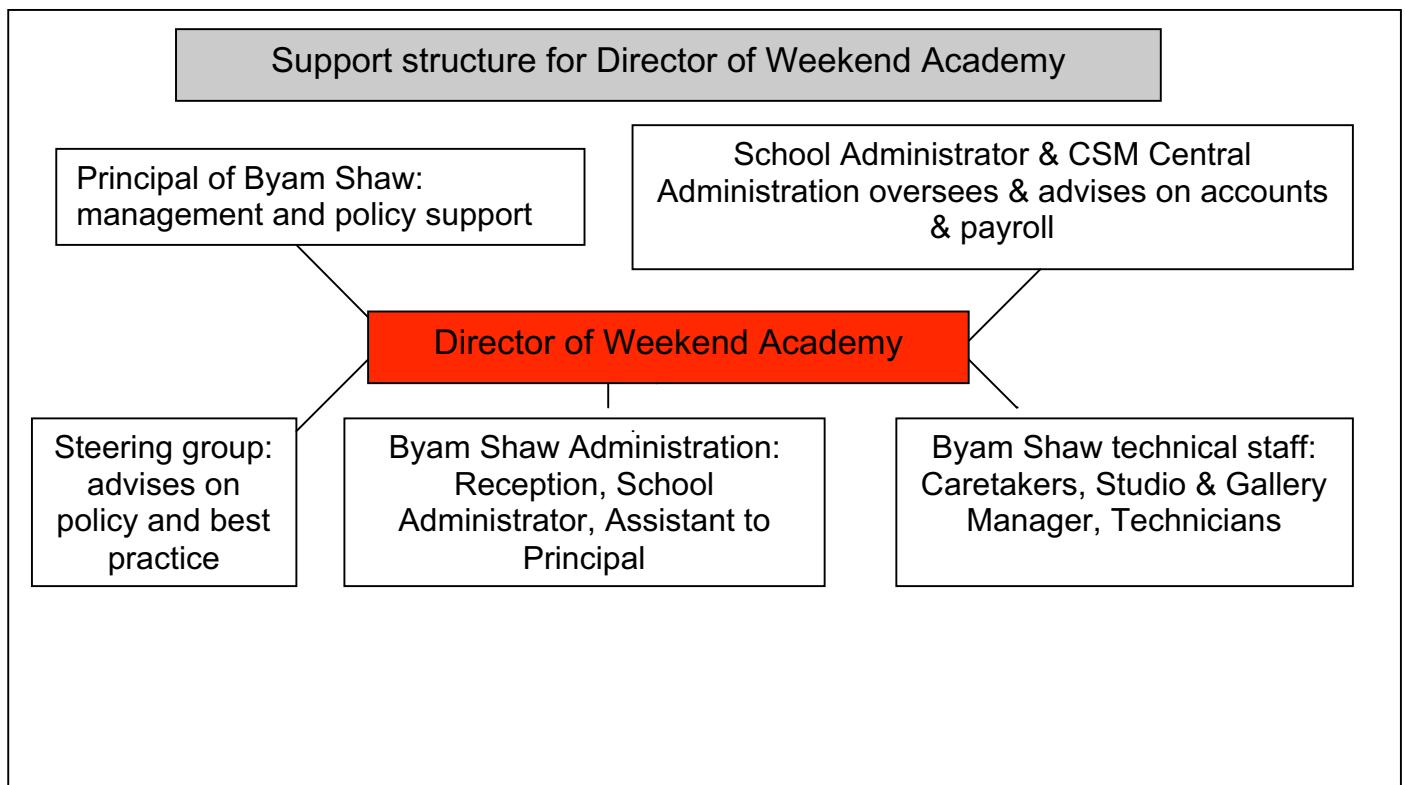
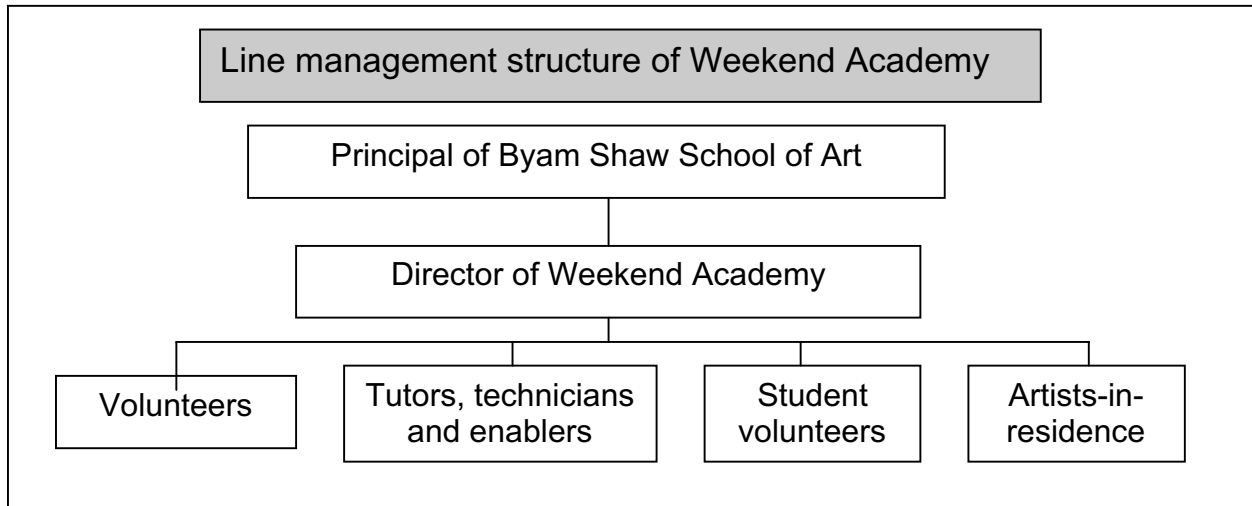
1.2 Background

Byam Shaw School of Art was established in 1910 as an independent school of Drawing and Painting. It has around 250 students and a small core staff, with up to 60 visiting tutors every year. All staff are practising artists. It has an impressive track record of promoting and supporting equality of opportunity, and numbers internationally respected disabled artists among its alumnae, including Yinka Shonibare, Lucy Jones and the late Meena Jaffrey. In 2003 Byam Shaw joined the London Institute as part of Central Saint Martins College of Art and Design, and so offers both to its students, and to the Weekend Academy, the benefits and links of a major higher education consortium, while retaining Byam Shaw's holistic ethos and intimate feel.

Weekend Academy at the Byam Shaw was established in May 2002 after a process of consultation with partner groups representing primary health care networks, local schools and special schools, older people, homeless and displaced people, D/deaf and disabled people, people with learning difficulties, and other marginalized groups, in Islington, Camden and Haringey.²

² see attached Appendix 1

1.3 Structure and management control of Weekend Academy



Weekend Academy is a branch of the Byam Shaw School of Art, and is co-ordinated by a part-time Director, whose post is funded by two major charities until August 2004. Byam Shaw School of Art is an educational charity³ with its own articles of association, and a company limited by guarantee⁴. In September 2003 Byam Shaw merged with Central Saint Martins College of Art and Design, a constituent college of the London Institute (itself an educational charity). Weekend Academy is a committee of the Byam Shaw School of Art, with its own terms of reference⁵ and aims and objectives. Representatives from partner groups⁶, together with disabled artists and users, sit on the steering group, which supports the development of policy and advises the subcommittee on best practice. The Principal of Byam Shaw School of Art chairs the steering group, which meets on average 4 times yearly. The steering group has an advisory role to the Director of the Weekend Academy: final decisions on policy and practice are made by the Principal of the Byam Shaw in partnership with the Director of the Weekend Academy. We expect over time that more users and artists will be appointed to the steering group and that their input will help shape best practice and the longer term direction of Weekend Academy's objectives, in line with our ethos of being user-focussed and demand-led.

1.4 How Weekend Academy operates

The Director of the Weekend Academy plans and timetables programmes, secures funding, and sources artists and tutors to work with projects and events. Weekend Academy uses both artists-in-residence and artist-tutors. Artist-tutors lead and deliver workshops and Saturday Studio sessions, and are supported in their proposals for developing schemes of work by the Director. The artist-in-residence differs from the artist-tutor in that the artist-in-residence will be spending a sustained period of time working with one particular community group, and will be leading a specific programme of work devised with that group, based on the artist's own work and ideas. Artists-in-residence have two primary functions: to develop their own studio practice using the Byam Shaw's facilities and staff support, and to share their work practice with the Weekend Academy's target groups. Typically they will be involved in leading and delivering workshops and will inspire and share skills

³ an educational charity no: 312775

⁴ company limited by guarantee registered in England no: 578011

⁵ see Appendix 2: Terms of Reference

⁶ SHAPE in Islington; Elfrida Islington (Siren project); London Metropolitan University; Union Chapel, Islington

with a wider community in this way. Weekend Academy works with artists-in-residence both on and off-site from the Byam Shaw premises.

There are two types of artists-in-residence, community-based and bursary-supported. Weekend Academy's community-based artists' residencies offer the opportunity for groups to work intensively with a professional artist, to visit and use the Byam Shaw's workshops and drawing studio, and to exhibit work made as part of the residency in the Byam Shaw's Concourse Gallery⁷. The Director of the Weekend Academy, together with the host organisation and artist, seeks funding for this type of residency. Bursary-supported artists' residencies based at the Byam Shaw offer artists an opportunity to spend a sustained period of time concentrating on their own professional practice, and to use the Byam Shaw's studio space and workshops. They are offered opportunities to lead workshops and summer schools as part of the residency and negotiate their input with the Director of the Weekend Academy according to their skills and interests. For example Nancy Willis and Lynn Cox, Weekend Academy's European Year of Disabled People-funded artists-in-residence for summer 2003, contributed master-classes and workshops for week-long summer schools and an Open Studios weekend, in their specialist areas of print-making and sculpture.

Artists-in-residence are at the heart of the Weekend Academy's programmes because they offer the direct experience of working with professional artists to Weekend Academy's user-groups.

Weekend Academy seeks to support artists at every stage in their careers and to offer professional development opportunities to younger and less experienced artists, particularly those from our target groups, and will offer support to artists who wish to lead workshops and work with groups.

Weekend Academy seeks to include the Byam Shaw School of Art's own students at every level in the development and delivery of Weekend Academy programmes and events. Byam Shaw students assist on the delivery of programmes and help develop and initiate work in their areas of interest – for example by proposing artists' residencies and work with local schools, and making connections with community groups in their home areas. The students at Byam Shaw are one of the Weekend Academy's strongest assets. They are all practising artists at an early stage in their careers, and their integration into

⁷ for example postgraduate student Tim Dixon's residency *new faces, new places* at Bridge School, Elthorne site

our activities provides them with a supported opportunity to gain useful work-experience, and offers Weekend Academy's users an opportunity to share and benefit from full-time young artists' training and enthusiasm. Foundation students who volunteer time with the Weekend Academy are often only 3-4 years older than GCSE students at local schools, and so offer the younger students an insight into a potential peer group and the first-hand experience of college life. Up to 24 students have volunteered with Weekend Academy during academic year 2002-3.⁸

Volunteers, including Byam Shaw students, offer skills and time to assist at events and workshops, or for specific functions such as graphic design.

1.5 Current funding

Weekend Academy has no endowment and currently fund-raises on a project-by-project basis for events and activities. Office space and office running costs for the Director are provided in kind by Byam Shaw School of Art, which also provides access to the facilities and workshops of the Byam Shaw without charge.⁹ However, the extra running costs of events and activities organised by the Weekend Academy at the Byam Shaw, are financed by Weekend Academy itself: these include staffing, care-taking and cleaning costs, as well as materials and consumables for art activities. Weekend Academy has no access to the income or reserves of the Byam Shaw School of Art, has a separate bank account and has an annual statement of income and expenditure.

1.6 Finance-raising objective

We seek to establish a firm financial basis for future growth and development of the Weekend Academy, to cover the yearly running costs as well as providing funds for special events and one-off projects.

⁸ assisting at: *The Big Draw at the Byam Shaw*, *Xposure* film weekend, life-drawing classes for local adults & school-students; working as enablers on European Year of Disabled People-funded summer schools 2003; postgraduate student Tim Dixon's residency *new faces, new places* at Bridge School, Elthorne site, London N19

⁹ see **6: Finance Section** for the estimated value of this provision in kind

1.7 What is being offered to funders

By offering support to Weekend Academy's programmes, funders will be able to demonstrate a practical commitment to promoting equality of opportunity and to investing in forward-looking arts programmes for the wider community. Weekend Academy offers funders an opportunity to become involved with a new and exciting project, which will bring tangible benefits to its participants. Funders' support for this project will give them the satisfaction of knowing that they have given potentially life-changing opportunities to people who participate in the Weekend Academy's projects: young people of school age, disabled people, disabled artists at a crucial stage in their careers, and people who have experienced exclusion.

Funders will have the opportunity to:

- attend private views of art exhibitions at Byam Shaw and other venues, including: exhibitions showcasing work made during artists' residencies, exhibitions of work produced by Weekend Academy participants, and the annual Byam Shaw Foundation, BA, post-graduate and MA fine art exhibitions;
- purchase work by young and emerging artists whose careers are being supported by Weekend Academy;
- hire or purchase print editions from Weekend Academy projects made in Byam Shaw's accessible print rooms;
- commission work made by groups and artists associated with Weekend Academy for offices or home;
- propose and support work with our target groups in whom they have a particular interest.
- Funders will receive full credits on all Weekend Academy at the Byam Shaw publicity literature and publications.

2.0 Weekend Academy's programmes on offer

Saturday Studio: integrated workshops for independent adults including disabled people, and workshops and drawing classes for young people 11-19



Developing drawing skills

Family Drawing Days: for children and their parents and carers to use the Byam Shaw's studios and workshops



The Big Draw at the Byam Shaw 2002

Artists-in-Residence in local schools, with local community groups and at Byam Shaw



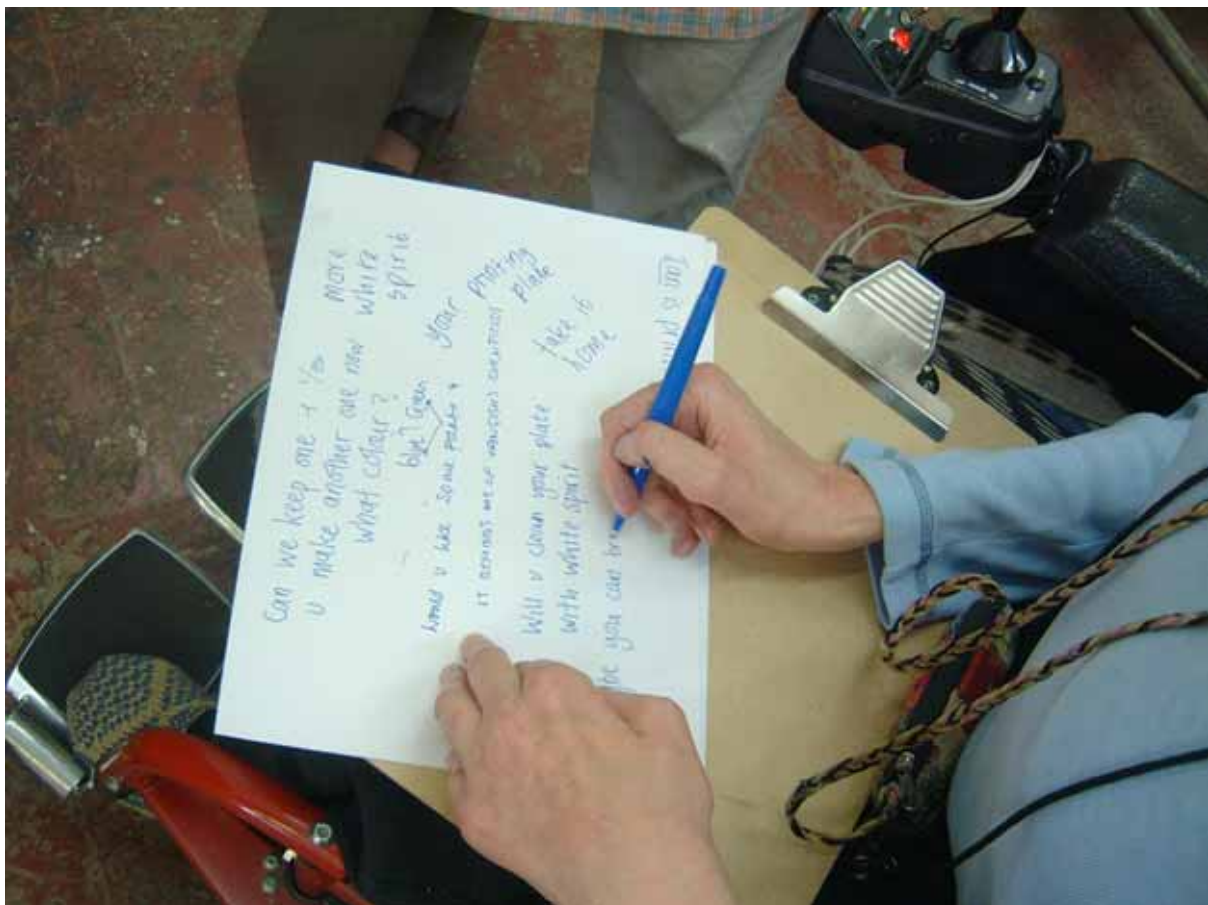
Tim Dixon's residency at Bridge School, Elthorne site

Visual Art Exhibitions in the Concourse Gallery at Byam Shaw: exhibitions of work made during Weekend Academy workshops, residencies and summer schools, and guest exhibitions



***Xposure* Disability Arts Festival 2002 exhibition at Byam Shaw**

Continuing Professional Development Days for D/deaf and disabled artists



Developing communication skills in the print-room

“I'm hoping the experience of the print course will kick-start me to print regularly again.”

Jeanette, hearing impaired summer school participant 2003

Summer schools for our target groups



“drawing into sculpture” summer school 2003

Summer Schools for our target groups



“drawing into printmaking” summer school 2003

“The tutors and staff were brilliant and it was a very nice, uncompetitive atmosphere with a wide range of interesting people. I thought it was well run, fun and highly successful.”

summer school participant

Other programmes on offer include Open Studios, film weekends, and other one-off events throughout the year, as well as mentoring schemes for younger and returning artists.

Weekend Academy plans to run a programme of workshops called Saturday Studio throughout the academic year, from September through to May, with breaks for Christmas and Easter. Saturday Studio workshops are led by professional artists, offering opportunities to D/deaf and disabled people and their families, people with learning difficulties, local teenagers and local school students, homeless people, and other excluded groups, to engage with drawing and making art.¹

Weekend Academy facilitates and initiates artists' residencies, so that disabled artists can have access to studio space and workshop facilities at Byam Shaw. Artists, including Byam Shaw students, undertake Weekend Academy residencies, and lead workshops in local school and community venues.² Weekend Academy runs regular Family Drawing Days, when parents, carers and children are encouraged to enjoy looking and drawing, and to experiment with a wide variety of materials.³ Byam Shaw School of Art hosts regular exhibitions of work made during Weekend Academy workshops and residencies. Weekend Academy offers exhibition space to partner organisations such as the London Disability Arts Festival⁴ and to local schools.⁵ Weekend Academy programmes and promotes related events such as disabled artists' film weekends⁶ and artists' talks.⁷ Weekend Academy

¹ Pilot Saturday Studio projects have included soft sculpture workshops for Elfrida Islington's Siren project, life-drawing jams for local school students and adults, and Family Drawing Days including *The Big Draw at the Byam Shaw*. Further details and photographs are included in Appendix 3.

² Lynn Cox and Nancy Willis, European Year of Disabled People artists-in-residence 2003; Tim Dixon, artist-in-residence at Bridge School, Elthorne site, summer 2003. Further details and photographs are included in Appendix 3.

³ *The Big Draw at the Byam Shaw*, October 2002 and October 2003; drop-in Family Drawing workshops March-April 2003. Further details and images are included in Appendix 3.

⁴ *Xposure* Festival 2003: further details and images are included in Appendix 3.

⁵ Henrietta Barnet School: "Family Backgrounds", July 2003; *new faces, new places*: Bridge School, July 2003

⁶ Disabled Artists Film Weekend as part of *Xposure* Festival, November 2002.

⁷ Artists who have presented and introduced work at Byam Shaw 2002-2003 include: Lynn Cox, Ju Gosling, Jim Hall, Thompson Hall and Nancy Willis, and film-makers Heli Ellis, Juan del Gado, Simon Green, Abigail Hirsch, Mikko Karhu and Jenni Meredith.

organises professional development events for D/deaf and disabled artists⁸.

Weekend Academy seeks to establish strong links with local schools and out-of-hours provision for young people, to support and enhance their pleasure in the process of creativity, and to provide an opportunity to experience professional art school activities for themselves at a crucial point in their lives. We offer opportunities to gifted and talented students, underachievers, and students interested in art and careers in the arts. Weekend Academy works with local schools⁹ and school students to offer access to life-drawing classes and artists' residencies

Weekend Academy has established through its steering group that there is demand from disabled and marginalized groups in London for access to further and higher education and to careers in the arts. Up to 80% of arts jobs in the UK are based in London: disabled people need access to these jobs through training networks. Weekend Academy will offer professional development in accessible facilities to emerging and mid-career D/deaf and disabled artists, to support their access to regular paid work as professional artists.

⁸ D/deaf artists Continuing Professional Development weekend during *Xposure* Disability Arts Festival, November 2003.

⁹ Schools in London boroughs of Islington, Barnet, Camden and Haringey including Acland Burghley School, College of the Arts, LB Camden; Mount Carmel RC Technology College, LB Islington; La Swap Sixth-Form Consortium, LB Camden



Artists Al Davison and Ian Steadman discussing prints made during summer school 2003

3. Weekend Academy's requirements

Weekend Academy needs funds and facilities to operate year-round. These include:

Costs for access and support for disabled users

- The running costs of the Steering Group: interpreters, travelling expenses, hospitality;
- Interviewing & recruitment costs for artists and tutors: interpreters, travel expenses, hospitality;
- Hire of specialist access requirement equipment for regular workshops & one-off events (for example an induction loop for Deaf and hard-of-hearing people);
- Interpretation costs (for example, lip-speakers or sign-language interpreters) for regular workshops and events: a budget for the year;
- Project-specific interpretation costs for one-off events (for example, workshops for Deaf artists); and
- Bursary, travel costs, materials' budget and technical assistance support for disabled artists-in-residence.

Staffing costs

- The running expenses of the Director's post: salary, travel, training, hospitality;
- Assistant to the Director for events and summer schools;
- Tutor fees at Arts Council current rates, technician fees for workshops, enablers' fees for workshops and events;
- Volunteer expenses: subsistence, travel, training (including Disability Equality training);
- Technician fees for hanging and striking exhibitions;
- Caretaking, reception and cleaning costs for the project; and
- Fees to artists undertaking residencies and presenting work.

Materials and consumables for workshops and events

- All art materials for the yearly programme;
- All art materials for one-off events (project-specific);
- Art materials for off-site artists' residencies (for example in local schools);
- Hospitality at private views (flowers, wine, refreshments);
- Hospitality at regular workshops (hot drinks);
- Framing and presentation costs for exhibitions.

Publicity and promotion costs

- Publicity and promotion costs for regular and one-off events and activities: graphic design, flyers and leaflets, postcards, mailings;
- Production and print costs for Annual Report;
- Design, print and postage costs for exhibitions;
- Establishing a website linked to the Byam Shaw website & updating it regularly; and
- Production costs for Weekend Academy limited edition print runs.

Equipment, handling and storage

- Replacing and repairing specialist equipment for disabled artists (for example, adjustable workbenches);
- Acquiring plan-chests and cabinets for accessible storage of Weekend Academy work and print editions; and
- Transport for art-work for exhibitions.

4. Weekend Academy's objectives: measuring and evaluating success

We seek to establish Weekend Academy as a centre for disabled and marginalised artists. Weekend Academy will offer access to networks; access to workshops and studio space; the use of exhibition space; and technical support, materials or bursaries for users. We will set our achievements against these bench-marks when we evaluate our progress.

Our first criterion for measuring success is to establish Weekend Academy as a hub of activity, including as a venue for partner organisations. Weekend Academy is located in an excellent art school, with an extant administrative infrastructure in place, a wheelchair accessible venue, good transport links and commitment to support for the project from the Byam Shaw. We seek to offer opportunities for many user groups to make use of our space: we will encourage participants to join our projects. We see the provision of opportunities for isolated artists and groups of disabled people to come together to build a strong and inclusive network based at the Byam Shaw as fundamental to the Weekend Academy's ethos.

Weekend Academy seeks to become a model of good practice. We will ask for and act on feedback from users and partner organisations. We aspire to offer flexible and accessible services and events and will see support from funders as a measurement of success. We hope to continue to be asked by partner organisations and funders to lead on joint projects and will see such partnership work as a measurement of success.

Weekend Academy seeks to become a model of good practice within the FE/HE sector in the UK.

We aspire to offer a model of good practice for staff-training, physical access, holistic implementation of the DDA, and support for students and users of our projects, to other educational institutions. We plan to lead within the London Institute on achieving a model of integrated practice within a Fine Art faculty.

Weekend Academy seeks to support participants into further study and achievement.

Weekend Academy projects will strengthen networks to aid progression of students at local schools & sixth-form colleges. We want Weekend Academy to be the first port of call for local groups and youngsters who seek art activities to support their studies, their career choices and their personal development. Byam Shaw's current Fine Art Foundation and the planned forthcoming Foundation Degree in art are obvious choices for progression for local students who have been involved in Weekend Academy projects as teenagers. We will monitor this through our own records of applicants to courses, and by asking for feedback from schools on their participating students' motivation and enthusiasm as well as staying-on and progression rates for GCSE, A & A/S levels.

Weekend Academy aims for sustainability in the medium and longer terms.

We believe we have drawn up an achievable plan for the forthcoming year's events. Our 'plant' costs are minimal, as the art school venue is offered 'in kind' from Byam Shaw. However we need to sustain funding for the staffing budget to enable us to plan from year to year and to achieve stability. It is an ongoing problem in the voluntary sector that funding is often not confirmed in the medium term and so small projects start up and fold quickly. Achieving funding to cover medium term (2-3 year) forward planning will demonstrate the sustainability of Weekend Academy and help the Weekend Academy meet its objectives.

Weekend Academy wants to be sure to be able to deliver top-quality work within budget.

We have a model established which we believe is workable and cost-effective. We will continue to assess this model over the next 2-3 years, to test whether this pattern of projects and workshops continues to be a workable and user-friendly blueprint.

Weekend Academy aspires to become user-led.

We wish to have a regular core group of artists and participants who see Weekend Academy as their own project and who will start to take on a self-determining role within the organisation. We therefore see establishing a vibrant user group and supporting participants to take an active role in the steering group as a measure for achieving this goal.

We seek to provide services for an increasing number of users.

Counting the numbers of participants in our projects will be an obvious benchmark for success, with the proviso that “softer” outcomes of quality, sustainability and steady build-up of integrated work are deemed important in the shorter term. We will monitor the numbers of visitors to exhibitions, participants in family, youth and adult projects, school students involved in residencies and workshops, artists trained and mentored, artists-in-residence each year, and exhibitions and events organised and hosted by Weekend Academy.

Weekend Academy seeks to make a difference to people’s lives.

‘Making a difference’ is something that will become apparent after some time, as we are looking to offer long-term benefits and not a ‘quick fix’ solution. We believe this is possible with Weekend Academy not least because we are working with the support of an extant and thriving art school at the Byam Shaw. We will measure this by assessing the difference which participating in Weekend Academy projects has made to participants’ lives, and in their awareness of what they can aspire to and achieve in the future.

4.1 Programme for the year

Weekend Academy at the Byam Shaw School of Art 2003-4

Weekend Academy will be basing some of its coming year's workshops on *drawing* and *books*, to connect the pleasures of reading and looking at pictures in books with drawing for all.

Drawing is accessible to everyone, of all ages and abilities, and everyone finds pleasure in drawing. Weekend Academy will support *writing*, *drawing* and *making books* as core activities for its sessions from September 2003. Book-making supports connections between illustration and text and encourages writing and literacy. Making books of drawings, and making and drawing in sketchbooks, supports school curricula and Key Stages in art and design.

Artist-led workshops will include:

- **regular life-drawing sessions and other drawing workshops**
- **family Drawing Days including *The Big Draw at the Byam Shaw* 18-19th October 2003**
- **making and using sketchbooks – for school students and adults**
- **family illustration workshops, where families can work on making books together, using drawing, photographs, found images and writing**
- **printmaking in our accessible print-room**
- **story-telling and story-boarding: cartoon workshops for teenagers and young people**

Year plan for Weekend Academy**Autumn term: October – December**

- 10 weeks' Saturday Studio for disabled adults and disabled artists (Saturdays 1 - 5)
- 10 weeks' Weekend Workshops for teenagers (Saturdays 10 - 3)
- October: *Big Draw at the Byam Shaw* weekend
- November: *Xposure* London Disability Arts Festival; Disabled Artists' visual arts exhibition, Byam Shaw School of Art
- Disabled Artists' Professional Development Weekend (Saturday & Sunday 11- 5) and follow-up day

Spring term: January – March

- 10 weeks' Saturday Studio for disabled adults and disabled artists (Saturdays 1 - 5)
- 10 weeks Weekend Workshops for teenagers (Saturdays 10 - 3)
- 2 Family Drawing weekends (Saturday & Sunday 1 - 5)
- Deaf Artists' Professional Development Weekend (Saturday & Sunday 11-5) and follow-up day

Summer term: April – July

- Summer schools for target groups: 3 weeks (total) in April and July.
- 2 Family Drawing weekends (Saturday & Sunday 1-5)

During the year at times arranged with participants:

- Disabled artists' residencies (2 months)
- An artist's residency in a local school or community venue
- An artist's residency in a school for young people with special needs (disabled or learning-disabled)
- Mentoring of deaf and disabled artists

Annual Closure periods:

Weekend Academy will be closed for periods of 2 weeks over both the Christmas and Easter holidays, during the school's annual holiday closure times. Weekend Academy will close for one month in the late summer annually to allow for staff annual leave.

5.0 The context in which Weekend Academy will operate

Within the Greater London area there is no organisation providing the type and quality of open access and professional development facilities comparable to those on offer at the Weekend Academy.

For disabled people who aspire to professional arts training at college or university, the provision of physically-accessible facilities in London is currently limited. We believe that the Byam Shaw is the only art-school or university art faculty within the London Institute, and is one of only two within Greater London, which has fully wheelchair-accessible print-rooms, purpose-built sculpture studios, and drawing studio, together with a fully wheelchair-accessible ground floor.¹ Byam Shaw is based at the Archway, North London, and is at the hub of a network of public transport links, which make access by bus, tube and train a practical possibility for many users of our services.²

Within the London area, provision of studio space and further professional development facilities for disabled artists is limited. Costs for the most part have to be self-funded by artists. Travel costs and travelling-times for wheelchair-users in particular make commuting out of their home area on a regular basis unfeasibly expensive, particularly when relying on taxis or public transport systems. Most disabled and marginalised artists are cash-poor; and without support in the form of travel costs, materials allowances, and enablers and technicians, may well not be able to make use of studio and workshop provision. Weekend Academy seeks to redress this pattern of inequality by ensuring that we offer generous support to users in the form of trained enablers, high-quality technical support, and bursaries and materials allowances where appropriate. Most events and workshops are at low or no cost to users.

Studio provision for disabled artists within Greater London varies enormously from borough to borough, with the major studio providers (registered charities Space Studios, ACME Studios) offering a small number of

¹ Wimbledon School of Art has wheelchair access to all floors by lift and fully/ potentially accessible studio and workshop spaces.

² buses (some wheel-chair accessible) 4, 17, 41, 43, 134, 143, 210, 263, 271, 390, C11, W5 from the City, central London, north and north-west London. Archway tube. Upper Holloway BR.

wheelchair-accessible spaces at three of their sites in east London.³ Rents for these spaces are £7.50 per square foot p.a., which works out at upwards of £2,500-£3,000 per year for an average space. This level of rent, although lower than that of commercial providers, puts regular access to accessible studio space out of the reach of low-income or unwaged disabled artists. Whilst there are plenty of studios for the general population in London, those for disabled artists are expensive as well as few and far between.

Both ACME and London Print Studio offer studio, workshop and training provision with a bursary or materials budget attached. ACME Studios offer live-work studios on fixed-term four-year leases⁴, with one bursary and studio per intake ring-fenced for a disabled artist. Professional print and exhibition facilities accessible by wheelchair are available at London Print Studio in West London, with access to training, a materials budget and studio time offered free of charge for a disabled artist through their annual "Making a Difference" residency. These are exceptional opportunities within London and offer a progression route for disabled artists.

There is an established network of providers within London, both for disabled people with a general and leisure interest in the arts, and for disabled artists, which offers access to arts activities via disability projects. SHAPE in London has workers in three London boroughs⁵ who set up arts projects for D/deaf and disabled people throughout the year. These include visual arts events and workshops. SHAPE also offers pan-London education and training including visual arts training. Artsline⁶, currently based in Camden, WC1, offers advocacy, access-audits, training and a Youth Arts programme for disabled people, and will be merging with SHAPE in 2004⁷. Voluntary sector organisations including Siren, Artscope and Actionspace offer arts workshops and supported art-studio provision for people with learning difficulties during week-days, at studios in north, central⁸ and east London.⁹ Weekend Academy

³ 70 spaces are fully/potentially fully accessible in three sites: Copperfield Rd E3, The Firestation E14, and Robinson Road E2.

⁴ 12 units at The Firestation, Gillender St, London E14 : next intake 2005.

⁵ Islington, Hammersmith & Fulham, Wandsworth.

⁶ Artsline is a disability access information service on the arts and entertainment venues and services in and around London.

⁷ based at LVSRC, N7.

⁸ Cockpit Studios, WC1.

⁹ Siren Arts project (based at the Elfrida Society, Islington N1), Artscope (Haringey N15), Actionspace (WC1).

will be offering regular weekend workshops, which will provide opportunities outside the weekday provision of statutory and voluntary sector organisations.

London Disability Arts Forum and its publication DAIL magazine¹⁰ provide a forum for reviews and arts opportunities, offer exhibition space, and sustain an emailing loop and networking for disabled artists (including performers and filmmakers) in the Greater London area.

Voluntary-sector and local authority-funded small arts organisations are vulnerable to funding-cuts in times of economic down-turn. Most funders and indeed central and local government see the arts as “adding value” and are aware of the benefits that cultural tourism and a vibrant arts “scene” bring to their local area and to Greater London: nevertheless the arts are seen increasingly as an option for cuts in statutory funding provision. Many small arts organisations are not able to attain stability or develop viable and sustainable infrastructures because their funding sources change from year to year, and a large proportion of management time is diverted to looking for funding to maintain staffing, premises and projects. Weekend Academy seeks to become a sustainable model of provision with a stable funding structure, working in partnership with established organisations and under the auspices of the Byam Shaw. Our workshops, office and studio space are offered in kind by the Byam Shaw School of Art.

Weekend Academy has initiated work with partner providers¹¹ and is establishing links to enable users from established projects elsewhere in London to make use of the professional facilities and networks offered by the Byam Shaw. Weekend Academy’s distinguishing feature, which adds a major asset to the network of provision for disabled people within London, is that as a University faculty of Fine Art it offers professional level workshop and studio facilities and professional technical support to all users. Participants in Weekend Academy’s projects have opportunities to experience some of the best-equipped and maintained art facilities in London. For the wider community within the local area, particularly families and school students, and for local teenagers, Weekend Academy offers a window onto life and career choices, and an opportunity to see how an interest in art can offer opportunities for further education, training for work, and jobs in London’s thriving arts and media sector.

¹⁰ quarterly from autumn 2003

¹¹ partner providers who have worked with Weekend Academy on joint projects to date include the Siren project at Elfrida Islington; SHAPE London; Artquest; *Xposure* London disability arts festival; local schools; and the Campaign for Drawing.

Appendix 1

The background to the establishment of the Weekend Academy

A paper by Alister Warman, Principal, Byam Shaw, November 2001.

The Weekend Academy at Byam Shaw School of Art

In Association with SHAPE, Artsreach, Union Chapel Project, The Drovers Centre, The Elfrida Society, Islington Age Concern, Islington Youth Service, Islington Arts Factory, Acland Burghley School, Harborough School, City & Islington College and the University of North London

The formative idea of the Academy is very simple. Byam Shaw has studios, workshops and other facilities which are idle at weekends and ‘sleep’ for a lengthy period of the summer: in Islington – in Camden and Haringey too – there are a variety of arts organisations serving special needs, constantly frustrated by inadequate premises and facilities. Byam Shaw has the plant: SHAPE and a host of other organisations have the expertise, developed contacts and client base. We want to work together to create something new and unique in London.

The organisations already committed to the project have long experience in working with special needs. However, the idea for the Academy is to integrate special needs with more general use of the facilities. Obviously there will be particular problems but, with sensitive management, these can be overcome.

Of cardinal importance is the provision of an hospitable environment. First of all this means implementing the extensive recommendations in the commissioned Disability Audit. As important is structuring the Academy so as to make things informal and convivial. It is fair to assume that many of the putative users will be leading difficult lives and experiencing some degree of social isolation. So, we see conversation, between and after workshops, as a key ingredient in the weekend. To ensure this we need to generate sufficient activity to make a café viable and also, maybe on Saturday evenings, a bar. Studio activity will drive the Academy but, as with any serious art school, dialogue will also be of the essence.

Over the last two years Byam Shaw has raised funds to enhance its facilities and the improvements under way have been designed to facilitate public access. The Jerwood Sculpture Studio is completed; all sorts of other transformations are also in progress.

It is recognized that the Academy will need to have an identity distinct from the Byam Shaw itself. Funding is being sought separately to appoint a director/manager of the Academy. As envisaged, this post will necessarily come under the umbrella of the School but the person appointed would also be answerable to a steering group representing the various partners using the School at weekends and over the summer.

Once the director/manager has been appointed (it is hoped in Spring 2002) the project might be inflected somewhat differently but the essential building blocks are already there. Byam Shaw School of Art will make no charge for workshop and studio facilities but caretaking and cleaning costs will need to be covered, as will any necessary technical assistance.

The immediate quest is to establish the operative plant so as to be properly prepared for wider public use and for special needs. We need:

- To ensure proper disabled access
- To render the building more generally user friendly
- To make the lecture room workable as a minema
- To improve darkrooms and print studios
- To re-design the library (and expand titles)
- To re-design the drawing studio/life room
- To make the café an adaptable social space

As developed so far, the project is already fairly ambitious in scope. Activities discussed range from video workshops with young people to film screenings (followed by discussion) for old people – with the expectation that creative interaction will happen between such groups. The facilities on offer will comprise:

- The best art library in North London
- A large drawing studio which can accommodate 30 people
- A large sculpture studio which can accommodate 10 – 20 people at weekends and 40 in the summer
- Photographic studios
- Printmaking studios
- Digital media studios
- IT room with internet access
- Lecture room/cinema
- Gallery for occasional exhibitions
- Café/bar

As required, there is technical back up for work in wood, clay, plaster, metal, plastics etc.

According to need, and dependent on intelligent/sensitive timetabling and management, the School could accommodate between 100 and 200 people each weekend and similar numbers daily over the summer.

The Weekend Academy will serve Islington, Camden, Haringey and, to a lesser extent, Hackney.

The various activities/workshops/discussions will be valuable in themselves but it is hoped that the Academy will make fresh and vital connections between different organisations, groups and , most importantly, different individuals.

A further aspiration is that, once established, the Academy will play a role as an agent linking artists with neighbouring institutions: schools obviously, but also hospitals, health centres and maybe Holloway and Pentonville prisons.

For the moment, the Weekend Academy is focusing on the visual arts but, as things develop, performance and music may well be considered, poetry workshops too.

Archway itself has excellent communications by tube and bus; the School has parking spaces allowing for disabled access.

So far, Byam Shaw School of Art has had generous support from the following foundations and charities:

- The Henry Moore Foundation
- The Headley Trust
- Garfield Weston Foundation
- Esmée Fairbairn Charitable Trust
- Austin and Hope Pilkington Trust
- Bernard Sunley Foundation
- The Rayne Foundation
- The Jerwood Foundation
- The Duke of Devonshire's Charitable Trust
- The Paul Hamlyn Foundation.

In addition our bursary scheme is supported by:

- The Kobler Trust
- The John Lyon's Charity
- South Square Trust
- The Drapers' Company
- Bloomberg

This funding, which totals close to £350,000, has enabled us to build a new sculpture studio and workshops, which constitutes a crucial new asset for the School, and to enhance several others. It is now supremely well equipped to serve the needs of summer school activities.

The Governors of the School now seek to raise a further £300,000 to build on the School's growing success and to ensure the Weekend Academy can become a key resource for North London.

Alister Warman
Principal

November 2001

**Appendix 2
Terms of Reference**

Terms of Reference for a Sub Committee

adopted on the2nd..... day of ...February..... 2003

A. SUB COMMITTEE NAME

The name of the sub committee is **Weekend Academy** (subsequently called the Academy).

B. FULL COMMITTEE NAME

The Academy is a project within **the Byam Shaw School of Art**, a registered charity, number **312775**, henceforth called “the School”.

C. PURPOSE OF THE ACADEMY

The purpose of the subcommittee as directed by the trustees of the charity, is to benefit the general public, especially those groups who are marginalized or excluded from society for any reason and particularly those with physical or mental disabilities, through advancing their education in the creative arts and providing facilities for art based activities for recreation and other leisure time occupation to improve the quality of life of the users.

D. POWERS

The trustees may delegate, in writing, to the Academy the exercise of those powers that the trustees consider necessary for the Academy to fulfil its business, provided that

1. The Academy are fully aware that such powers are at the discretion of the trustees and can be removed at any time
2. The trustees are fully aware that the proper exercise of those powers by the Academy remains the responsibility of the trustee board, including the proper use of all assets, even if within the scope of the Academy’s powers.

Appendix: powers to be delegated: ;

1. Power to raise funds and to invite and receive contributions provided that in raising funds the Academy shall not undertake any substantial permanent trading activities and shall conform to any relevant requirements of the law

2. Power to set up a bank account in the name of the Academy and to deposit and withdraw funds as are needed for the Academy's purposes
3. Power to co-operate with other charities, voluntary bodies and statutory authorities operating in furtherance of the objects or of similar charitable purposes and to exchange information and advice with them, provided that any formal arrangements are cleared with the trustees
4. Power to produce separate accounts and financial information relevant to the Academy
5. Power to do all such other lawful things as are necessary for the achievement of the objects.

E. APPOINTMENTS TO THE ACADEMY

1. The Academy shall be run by a Steering Group consisting of not less than 3 members nor more than 10 members being:
 - (i) the Chair, who shall be the Principal of the School
 - (ii) not fewer than 2 and not more than 9 other members appointed in such manner as the trustees of the charity shall decide. Sub-committee members do not need to be trustees or members of the charity.
2. The proceedings of the Steering Group shall not be invalidated by any vacancy among their number or by any failure to appoint or any defect in the appointment or qualification of a member.

F. TERMINATION OF MEMBERSHIP OF THE STEERING GROUP

A member of the Steering Group shall cease to hold office if he or she:

1. Period of appointment by the trustees expires and is not renewed
2. Is removed by order of the trustees, provided that the member of the Steering Group has the right to representation in front of the trustees and to be accompanied by a friend at such representation.

G. STEERING GROUP MEMBERS NOT TO BE PERSONALLY INTERESTED

1. No member of the Steering Group shall acquire any interest in property belonging to the charity (otherwise than as a trustee of the charity) or receive remuneration or be interested (otherwise than as a member of the Steering Group) in any contract entered into by the charity, or the Academy.

H. MEETINGS AND PROCEEDINGS OF THE STEERING GROUP

1. The Steering Group shall hold at least 3 meetings each year. Further meetings may be called at any time by the Chair or by any two members of the Steering Group upon not less than 3 days' notice being given to the other members of the Steering Group of the matters to be discussed.
2. If the Chair is absent from any meeting, the members of the Steering Group present shall choose one of their number to be Chair of the meeting before any other business is transacted.
3. There shall be a quorum when at least one third of the number of members of the Steering Group for the time being or three members of the Steering Group, which ever is the greater, are present at a meeting.
4. Every matter shall be determined by a majority of votes of the members of the Steering Group present and voting on the question but in the case of equality of votes the Chair of the meeting shall have a second or casting vote.
5. The Secretary (or other person appointed by the Steering Group) shall keep minutes of the proceedings at meetings and report them promptly to the Trustees of the charity.

I. FINANCE

The funds of the Academy, including all donations, subscriptions, grants and bequests, shall be used solely to further the objects of the charity and within the scope of powers delegated to the Academy by the trustees.

1. All monies shall be paid into an account operated by the Academy in the name of the Academy at such bank as the Academy shall from time to time decide. All cheques drawn on the account must be signed by at least two people, one of whom is the Director of the Academy, and one of whom is the Principal of the School (Chair) or the Bursar responsible to the Trustees.

J. ALTERATIONS TO THESE TERMS OF REFERENCE

This terms of reference may be altered by a resolution passed by the Trustees of the charity.

K. WINDING UP THE ACADEMY

Trustees of the charity may dissolve the Academy at any time.

Signed

Chair

.....

.....

Appendix 3: Achievements to date: pilot projects

Between October 2002 - September 2003 Weekend Academy has completed a full academic year of events, residencies, summer schools, workshops and exhibitions. Participants have ranged in ages from under 5 to over 80, and have come from the London boroughs of Newham, Camden, Ealing, Enfield, Hackney, Haringey, Islington, Southwark, Waltham Forest and Westminster.



Weekend Academy launched its Family Drawing Days with the *Big Draw at the Byam Shaw* for local families and adults, October 2002. Young actors in costume from the National Youth Theatre recreated scenes from famous paintings and participants drew and exhibited their own versions in the Concourse Gallery, assisted by Byam Shaw students. Weekend Academy won one of four national Drawing Inspiration awards from the Campaign for Drawing for this project.

The Big Draw at the Byam Shaw
www.drawingpower.org.uk/BigEvents/awardedetails2002

Xposure Festival at the Byam Shaw, November 2002

Weekend Academy hosted a visual arts exhibition and disabled artists' film weekend event, as part of *Xposure* 3rd London Disability Arts Festival. Five disabled artists showed installation, video, painting, sculpture and mixed media work, and exhibiting film and visual artists introduced their work and talked to visitors.

Wild Bunch at the Byam Shaw, December 2002

Elfrida Islington's **Siren** project for adults with learning difficulties used the drawing studios at the Byam Shaw for designing and painting life-size soft sculptures, to be used as part of the ambient visuals for their regular Wild Bunch club night.



Exhibitions in Byam Shaw's Concourse Gallery and studio spaces, July 2003

New Faces, New Places

Year 12 students from neighbouring Bridge School, Elthorne site, in Elthorne Road, showed work made during Tim Dixon's residency in the summer term 2003. Dixon worked with a group of 8 students with ASD (autism) in the sculpture and drawing studios at Byam Shaw, and on site at Bridge School. Students used the experience of working in new materials and with large formats in Byam Shaw's spaces as a bridging process for their move to further education in a different college building.



Family Backgrounds

Weekend Academy hosted an exhibition of 35 works on canvas for Henrietta Barnet School's year 10 students, from a project led by artist Roy Pickering. Staff, students and their families enjoyed a vibrant private view evening in the ground floor studio spaces at the Byam Shaw.

Weekend Academy life drawing jams and family workshops 2003

Local school students and adults joined in Saturday morning life-drawing jams in the spring term of 2003, working from the model with a wide variety of drawing materials. Byam Shaw students assisted and discussed ways of drawing and progression to art and design careers with participants. Some students stayed for afternoon Open Drawing Workshops to develop their GCSE portfolios, with local families and children under 10, drawing portraits and drawing from the imagination.

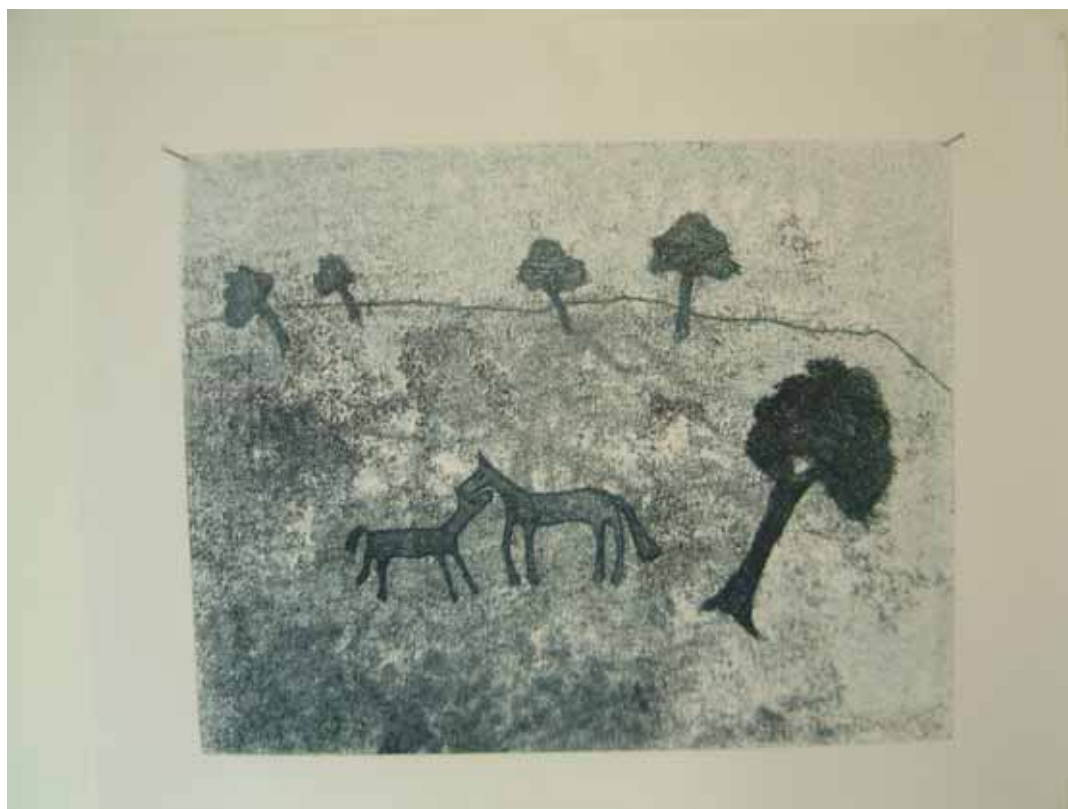
European Year of Disabled People funded projects 2003

Weekend Academy received a substantial award from EYoDP to offer two artists' residencies and three weeks of summer schools in Byam Shaw's accessible studio spaces, with an exhibition in November 2003 in partnership with *Xposure* 2003 disability arts festival. The project has been developed and led by and for disabled artists and disabled people.



Artists' residencies June – August 2003

Lynn Cox and Nancy Willis were appointed as artists in residence. Sculptor Lynn Cox developed large-scale wall-drawings and light drawings for a forthcoming exhibition, and painter-printmaker Nancy Willis spent an intensive period using Byam Shaw's wheelchair accessible etching and intaglio facilities.



Monoprint, Nancy Willis, July 2003.

Open Studios August 2003

Lynn Cox and Nancy Willis opened their studios to the public, and students from the summer school brought friends and family to see a mixed exhibition of prints drawings and sculpture produced during the July summer school weeks.

Cox and Willis Exhibition: Xposure festival, November 2003

Cox and Willis showed large scale sculpture, wall-drawings, paintings and prints developed during their residencies at the Byam Shaw, in the Concourse Gallery at Byam Shaw, as part of the London wide Xposure Disability Arts Festival 2003.

Summer Schools July 2003

Weekend Academy's first summer schools offered an introduction to *drawing into printmaking*, and *drawing into sculpture*, developed in consultation with Weekend Academy's artists in residence and tutored by disabled artists. Thirty-seven participants with an age range of 20 to 80 spent two intensive weeks in the school's accessible sculpture yard, drawing studios and print-rooms, making sharing and talking about art and processes.



**Continuing Professional Development Weekend for D/deaf artists
November 2003**

Weekend Academy hosted a fully interpreted weekend of training led by D/deaf tutors for D/deaf artists, with a specific remit to develop presentation, CV writing and personal development skills for D/deaf visual artists.

Forthcoming workshops and events: October 2003 – March 2004

Saturday Studio: October - December 2003, January - March 2004

Weekend Academy is running regular Saturday Studio workshops in drawing, life-drawing and printmaking in Byam Shaw's drawing studio and print-room, for homeless and disabled people from Islington and other London boroughs. These sessions are funded for this academic year by Islington Community Chest and the Community Fund (Awards for All).



Greenhouse Foundation partnership project

Weekend Academy is developing a project with the Greenhouse Foundation to offer regular weekend art workshops for local disengaged youngsters aged 11-20 for the forthcoming academic year 2003-4.

Sculpture & bronze casting proposal with Union Chapel Project, Spring 2004

Weekend Academy is in partnership with the Union Chapel Project to develop a commissioned sculpture to be created by a group of homeless people in Byam Shaw's workshops, which will be cast in bronze for permanent installation at the Union Chapel, Islington N1.

Photographs throughout are by Deborah Froome, Director of the Weekend Academy.

Appendix 4: Definitions

accessible: with full wheelchair access

AIR: artist-in-residence

DDA: the Disability Discrimination Act

D/deaf: a deaf or hard of hearing person who identifies themselves with the Deaf community/ a deaf or hard of hearing person who does not identify themselves with the Deaf community - (an inclusive term in current use)

“open level”: open to people of all levels of ability

marginalised: someone excluded from opportunities available to the mainstream of society through poverty, age, ill-health, disability, homelessness or other impairment or lack of support